



## CHEAT SHEET SAQQAQ

Discover the captivating allure of Disko Bay, where majestic icebergs stand tall against a backdrop of vibrant painted houses and serene azure waters. Immerse yourself in a world where time seems to stand still, embracing the rich traditions of the local community. Our Camp Saqqaq is located just 700 meters from the village, offering a perfect balance of cultural interaction and the untouched beauty of the wild nature surrounding it.



## HOW TO GET HERE

### THROUGH ICELAND

You can fly direct to Ilulissat from Reykjavik, which takes approx. 3.5 hours. The flights on this route are operated by Icelandair or Air Greenland. During summer, there is flight most days of the week.

### THROUGH DENMARK

With daily flight in summer, you can go from Copenhagen to Kangerlussuaq in 4.5 hours. A connecting flight gets you to Ilulissat in 45-minutes.

### FROM ILULISSAT TO SAQQAQ

Upon your arrival in Ilulissat, a warm welcome awaits as your dedicated Nomad Host greets you and ensures your every need is met before embarking on a remarkable journey to the camp. As you embark on the mesmerizing 120-minute RIB boat ride\*, meandering through ethereal forests of ice, the chaos of everyday life dissipates, allowing the enchantment of nature to captivate your soul.

\*For a seamless transfer, you also have the option of a private closed boat or a scenic 25-minute helicopter flight.

## ARCTIC SOLITUDE

Nestled along the enchanting west coast of Greenland, 10 km North of the renowned Ilulissat ice fjord, lies the captivating village of Saqqaq. Here, in a realm of boundless expanse and tranquility, time takes on a different rhythm. Accessible solely by boat or helicopter, Saqqaq unveils a world untouched by the rapid pace of modernity.

Step into this idyllic hamlet and be embraced by a community whose traditional way of life remains steadfast.

Limited to 10 guests at  
a time to secure an  
exclusive and personal  
experience



## COMFORT DESPITE THE WILDERNESS

Nestled in a region steeped in Greenland's rich history, Saqqaq holds a special place as one of the country's earliest Inuit settlements. Featuring six tents, inside, you'll find spacious accommodations adorned with full-size beds, luxuriously soft arctic-grade linens, cozy reading chairs, and ambient lighting. For your convenience, each teepee boasts a private bathroom equipped with hot water showers, separation toilets, and locally crafted bath products

# ALL INCLUSIVE

Enjoy three gourmet meals a day plus snacks, picnics and barbecues, locally brewed beer, boutique wines by Denmark's premier winery, soft drinks and pure spring water.

All private guided experiences are also included as well as a private host throughout the stay.

## INCLUSIONS

- English-speaking personal host
- Pick-up at the airport
- Local transport in Ilulissat
- Transfer to and from Saqqaq in RIBH boat (Zodiac)
- Private and exclusive tours
- Shared double room with a private bathroom & toilet.
- Full board during the stay.
- House wine, cocktails, and soft drinks
- Taxes and tariffs.

## EXCLUSIONS

- Closed boat or helicopter transfer
- Single room supplement
- Flights to Ilulissat
- Meals in Ilulissat
- Accommodation in Ilulissat
- Personal expenses

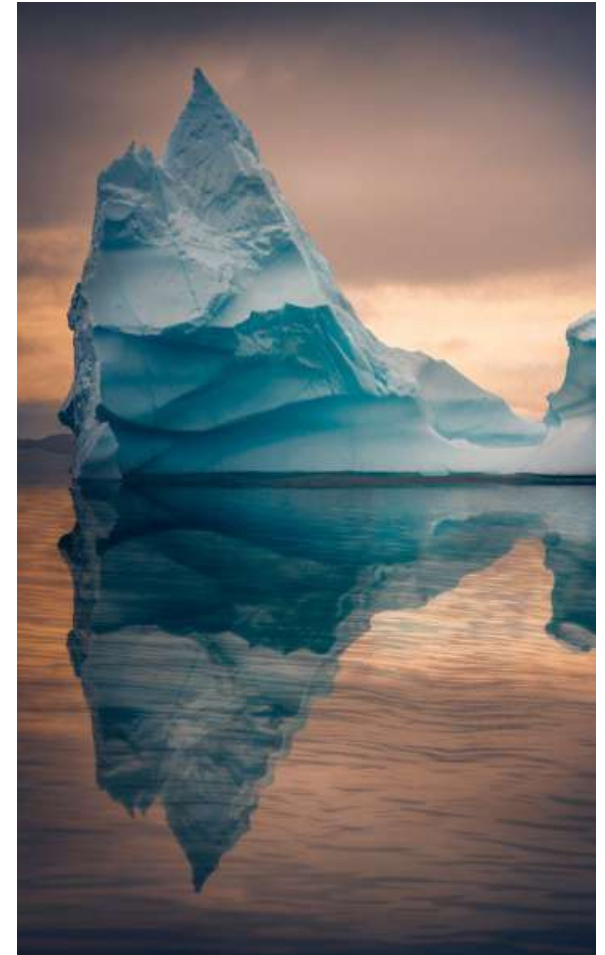
(Special wines can be ordered on request)





## ACTIVITIES

Experience the thrill of fishing, take a refreshing swim in the Arctic Ocean, paddleboard among icebergs, hike through breathtaking landscapes, join whale safaris and meet the Greenlandic dogs. Immerse yourself in the local culture as you enjoy coffee with the locals, fish together, and learn traditional techniques like drying or smoking fish. Our activities cater to all levels, ensuring an extraordinary experience.

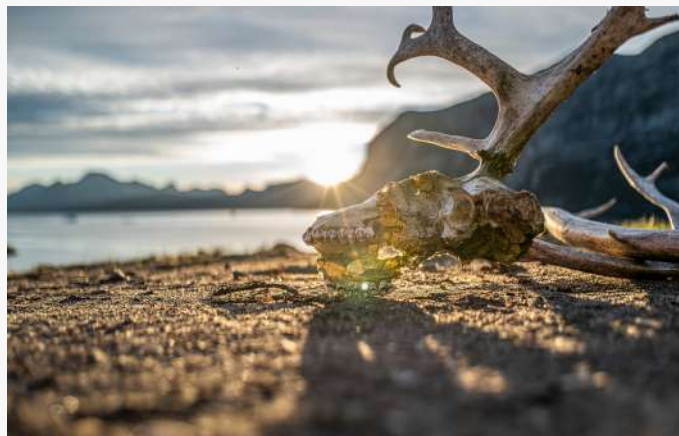




## SHORT SEASON

The Saqqaq camp is set every May and will vanish without a trace at the end of September. Giving a season of barely four months.

We are ready to welcome the first guest the first week of July and will start to get ready for winter when the last guest leaves after the last week of September.



# SLEEPING TENT

Wake up rested and ready for the day's adventure is of great importance!

The tent comes with a 22 cm deep luxury allergy-friendly mattress with pressure-relieving memory foam. The beds are in size 90x200 cm and can be set up as single or double beds.

- Two duvets per Person
- One pillow per person
- Electric heating blanket
- Two towels and a bathrobe pp
- Snacks and water
- Sleeping mask
- Two small tables
- Chairs
- Electric heater
- Insect repellent
- Baskets for storage
- Furs, Candle and fairy lights



# BATH TENT

Step into your own private sanctuary in the midst of nature. Our sleeping tents offer the convenience of an en-suite bathroom, complete with a refreshing hot shower powered by a 60-liter water heater. Embrace the uniqueness of our eco-friendly separation toilet, which efficiently separates waste while ensuring cleanliness. Freshen up at the sink and relish the blend of simplicity and coziness that defines our tranquil tented retreat. Indulge in modern comforts while immersing yourself in the natural beauty that surrounds you.





# DINING

The dining tent has a built-in kitchen, allowing guests to observe and participate as the chef creates fresh, gourmet meals.

Hosted by some of the region's best chefs, Kiattua prides itself on serving gourmet meals inspired by local ingredients. Often, we forage for wild berries, mushrooms, and herbal teas ourselves; pristine fish and seafood are caught just off camp in the fjord; and local hunters supply reindeer and muskox.

We also serve premium spirits, boutique wines from Denmark's premier winery, and craft beer from a small brewery in Nuuk, but if you can't live without something special, you can pre-order from a list of international wines, champagnes, and spirits ahead of your stay.

We can serve ten eating guests at once.



# MEALS

## Breakfast buffet:

Whenever you want it, but always a hearty buffet including fresh bread, pancakes, homemade jams, cheese board, smoked fish, sausages, fresh fruit, yogurt, cereal, eggs, bacon, coffee, teas, and infusions.

## Lunch example:

Grilled musk ox hot dog wrapped in bacon with chutney, soft-fried onions, marinated fresh cucumber salad, lettuce, French fries, and dip with Labrador Tea.

One day this could also be a traditional BBQ at an ancient burial ground overlooking the ice fjords. At traditional Inuit camps, flat rocks were often used instead of frying pans to cook over the fire.

## Dinner example:

Starter: Smoked halibut with salad and cucumber or Snow crab bisque with crab meat and garlic oil

Main menu: Grilled catfish with cauliflower, lemon blanquet, and citrus herbs or Greenland halibut jaws served with roasted potatoes, puréed celery root from chiffon, and parsley foam.

Dessert: White and dark chocolate mousse with Greenlandic rhubarb



## WHEN TO TRAVEL?

**June:** Experience the enchantment of Greenland during the extraordinary phenomenon of the midnight sun. From June until mid-July, the sun never sets, creating a surreal landscape bathed in endless daylight. Immerse yourself in the ethereal glow that blankets the land, allowing for extended exploration and awe-inspiring moments under the never-ending sunlit sky. This unique time of year offers a truly unforgettable experience in Greenland's stunning natural surroundings.

**July:** As summer progresses, July brings an abundance of marine life to Greenland's waters. Witness the majestic presence of whales as they migrate to the area, creating unforgettable encounters. Additionally, this is the ideal time to try your hand at fishing for the Arctic char, a prized catch that will satisfy your adventurous spirit.

**August:** The month of August brings a delightful opportunity to forage for berries and various herbs in Greenland's pristine landscapes. Indulge in the flavors of the wild as you discover nature's pantry, gathering fresh and flavorful ingredients. As the month progresses, keep your eyes peeled for the mesmerizing Northern Lights that begin to grace the night skies, providing a captivating display.

**September:** September in Greenland offers a unique blend of tranquility and natural wonders. With the departure of mosquitoes, you can fully enjoy the serene surroundings without any bothersome insects. As the evenings grow darker, the Northern Lights become a regular spectacle, painting the skies with their vibrant colors. Embrace the beauty of the fall season as vibrant autumn hues blanket the landscape, creating a picturesque setting for exploration and reflection.

No matter which month you choose to visit Greenland, each offers its own special allure and captivating experiences, inviting you to embark on an unforgettable journey of discovery.





## CLEANING

All tents are cleaned every day; this is done during the hours when the clients are out for adventures. Sheets, towels, and bathrobes are kept the same daily unless the guest asks for it differently.

## EVENING ROUTINE

During the client's dinner, the tent is prepared for the night. This means that all lights and candles are lit, we fire up the heaters and turn on the heating blankets. In this way, the tents are nice and warm when the clients return to their tents for the night.

## SNACKS

Every day we provide a bottle of water and snacks in the tents, typically consisting of chocolate, various nuts, and dried fruits. In the dining tent, there is always coffee, tea, soft drinks, beer, wine, or drinks.



## WATER

Sourced from the nearby river, which is replenished by one of the glacial meltwater streams supplying water to the entire village, our water supply ensures a fresh and abundant source for our camp. The kitchen and toilets are equipped with running water, providing both hot and cold options for your convenience and comfort.

## ELECTRICITY

All tents are equipped with electricity.

The standard voltage is 230 V, and the frequency is 50 Hz. You can use your electric appliances if the standard voltage in your country is between 220 - 240 V (as is in the UK, Europe, Australia and most of Asia and Africa).

## HEATING

All sleeping and toilet tents have electric heat fans and electrical heating blankets for the beds.

Besides this, you will find two duvets in each bed, and extra blankets can be provided.



## WASTE

All non-organic waste generated at the camp is carefully transported back to the village for proper disposal. Within the camp, we prioritize the responsible management of organic waste by collecting it separately and returning it to nature, where it can be recycled within the food chain. Wastewater is directed to a designated dry well. To maintain environmental harmony, we kindly ask that only organic soap.

## MOSQUITOES

While Greenland offers breathtaking natural beauty, it is important to be aware of the presence of mosquitoes. Our tents are equipped with quality insect repellent, after-bite lotion, and mosquito nets, ensuring a pleasant experience in the midst of nature. We refrain from using harmful chemicals, embracing eco-friendly practices.

## LUGGAGE

When guests arrive or leave Saqqaa the staff will bring the luggage to and from small village harbor.

We recommend traveling relatively light and to pack in waterproof suitcases or duffel bags.